



Installation Instructions - Side Window Air/Rain Deflectors

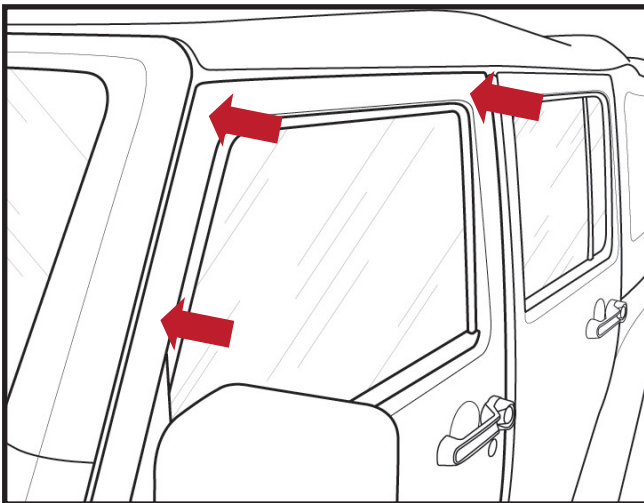
Note: Application and product may vary from illustrations.

Caution: Before driving, ensure that all deflectors are secured properly.

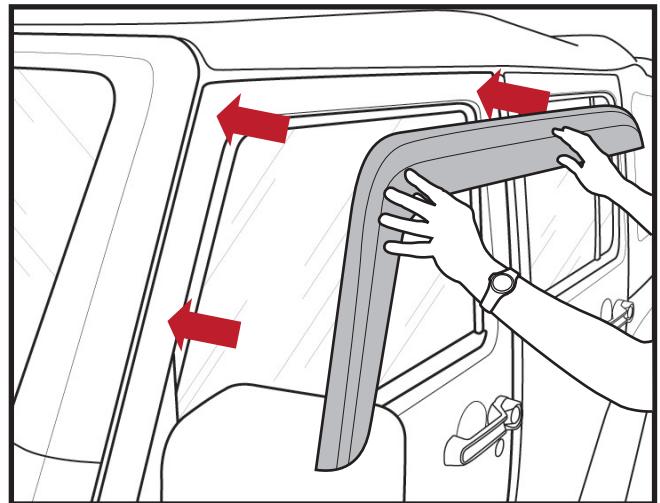
Please read all instructions before installation of Wind/Rain Deflectors

Preparations Before Installation

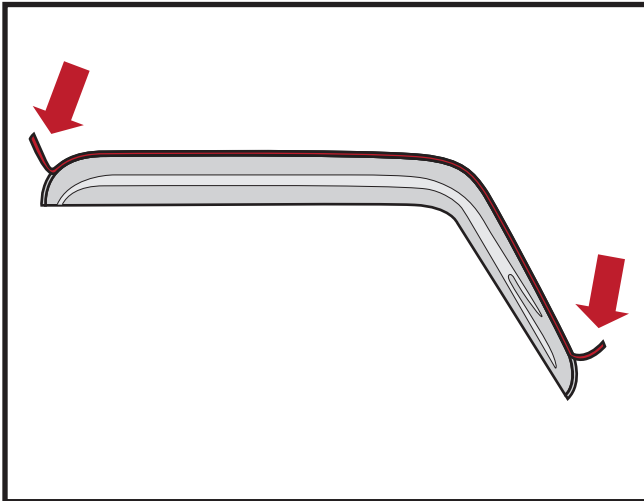
- Check and determine if Wind/Rain Deflectors are the correct fit for your vehicle.
- Wash and Clean all mounting surfaces of the vehicle using Isopropyl Alcohol (Rubbing Alcohol).
- To ensure proper bond apply only when temperatures of mounting surfaces is between 65-110°F.
- Be sure all mounting surfaces are dry before installation.



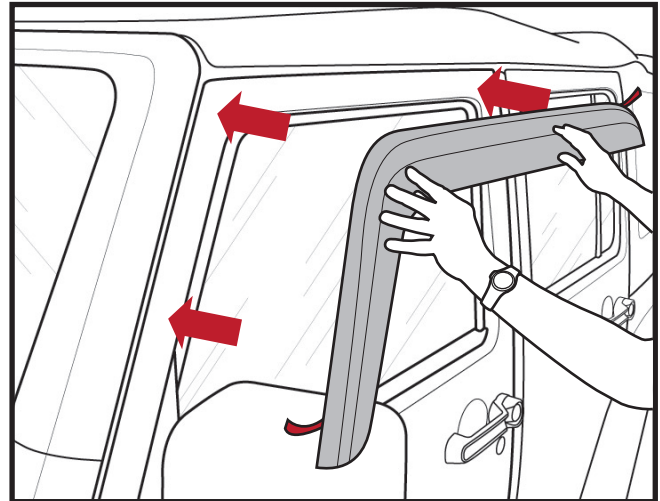
STEP 1 - Clean the painted surface where the deflector will be attached using Isopropyl Alcohol (Rubbing Alcohol).



STEP 2 - Hold and position deflector to determine mounting position.

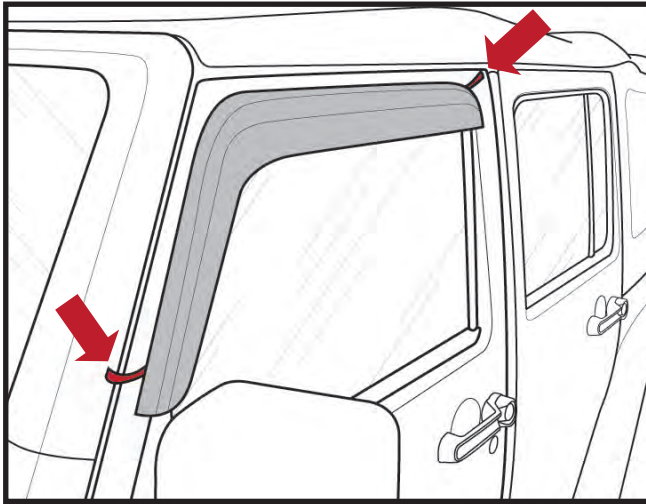


STEP 3 - Remove 2" of tape liner from each end of the deflector.

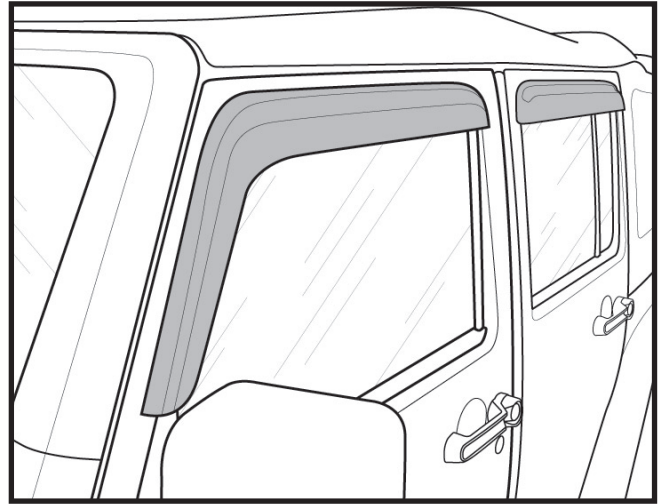


STEP 4 - Place the deflector in a desired location on the door.

Continue to Next Page



STEP 5 - Once the deflector is positioned, carefully pull and remove the tape liner. Apply firm pressure along mounting surfaces to secure.



STEP 6 - Apply same methods to the rear deflectors (if applicable).

Safety Information

- CAUTION - Before driving, check and ensure that all deflectors are properly mounted and secured to vehicle.
- Periodically check and ensure that all deflectors are properly mounted and secure to vehicle.

For Technical Assistance Contact:
Omix-Ada Tech Support
Phone: 1-800-449-6649
Email: techsupport@omix-ada.com
Web: www.Omix-Ada.com

Omix-Ada © 2011