

JK Billet Aluminum Console Shift Bezel Manual 07-10

Contents: Manual Shifter Bezel (1)



PLEASE READ AND UNDERSTAND ALL INSTRUCTIONS BEFORE YOU BEGIN

Step 1. Remove the shifter knob. Pull it off by firmly pulling it back and forth until the shifter knob slides off.



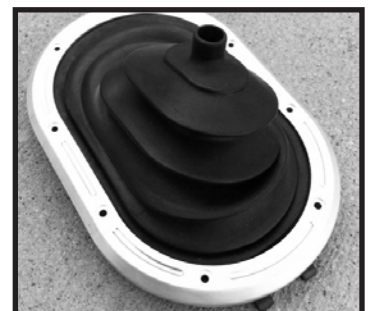
Step 2. Remove the existing bezel with a flat tool (e.g. Screwdriver). Pry up the rear side of the bezel releasing the two attached clips.



Step 3. With a screwdriver, separate the lower ring from the boot joint.



Step 4. Re-assemble parts using your Rugged Ridge bezel, joint boot and lower ring. Fasten parts together using the 8mm bolts and nuts provided.



JK Billet Aluminum Console Shift Bezel Manual 07-10

Step 5. Re-install new assembly by sliding in the lower ring into your console then push down the assembly until it snaps firmly into place. Re-install shift knob.



For Technical Assistance Contact:
Omix-Ada Tech Support
Phone: 1-800-449-6649
Email: techsupport@omix-ada.com
Web: www.Omix-Ada.com

Copyright Omix-Ada 2011